

MEMOR™ 10



MEMOR™ 10 – A MOBILE COMPUTER DESIGNED FOR ENTERPRISE

If you are looking for the power and the performance of a mobile computer but are concerned about the typical Enterprise challenges, the Datalogic Memor 10 PDA is the perfect rugged device for you!

Memor 10 incorporates the latest mobile computer technologies and the user friendly experience of Android™ in a slim and compact design, combined with high performance 1D/2D bar code scanning and industrial robustness for almost any indoor or outdoor environment.

TOP PERFORMANCE

The Memor 10 is powered by a superior octa-core platform clocked at 2 GHz for top performance for the most demanding applications, and features Android 9 (upgradeable to Android 10) with Google Mobile Services (GMS).

Moreover, the Memor 10 is one of the first rugged mobile computers to be validated by Google for the 'Android Enterprise Recommended' program for rugged devices.

WIRELESS CHARGING MEETS SWAPPABLE BATTERY

The Memor 10 incorporates Datalogic's industry-first wireless charging system for ultra-reliable contactless charging, thus eliminating the need for cleaning contacts on the device and docks. Moreover, Memor 10 offers a 1-piece swappable battery for the best operational advantage.

COMMUNICATIONS

The Memor 10 leverages a complete set of embedded wireless technologies for both indoor and outdoor applications: dual band Wi-Fi including the latest 802.11ac standard, Bluetooth® v5 with BLE for fast and ultra-low power connections, NFC for easy pairing, and particularly the cellular area voice and data connectivity, already leveraging the next generation of LTE-Advanced/4G+.

FEATURES

- Ultra-Ergonomic, compact and robust
- 5 inch capacitive multi-touch HD display with Dragontrail™ hardened glass
- Android 9 with Google Mobile Services (upgradeable to Android 10)
- Wireless charging eliminates all contacts on the device and cradle
- Ruggedized with drop resistance to 1.5 m / 5 ft to concrete and IP65 sealing
- Dual band Wi-Fi including the latest 802.11ac standard and 802.11r/k for fast roaming
- Full suite of cellular connectivity for voice and data, featuring LTE-Advanced / 4G+
- Assisted GPS for location based apps
- Bluetooth v5 short range wireless technology
- NFC for proximity communications
- Advanced 2D ultra-slim imager with Datalogic's patented 'Green Spot' technology for visual good-read feedback; Megapixel imager
- Datalogic's SoftSpot™ technology for innovative triggering through the touch display
- Chemical resistant plastics / enclosure designed to withstand daily cleaning with harsh disinfectant solutions
- EASEOFCARE Service Plans offer a wide range of options to protect your investment, ensuring maximum productivity and ROI. Datalogic Shield, for Android security patches and OS upgrades, is included with EASEOFCARE.

INDUSTRY - APPLICATIONS

- Retail:
 - Assisted sales
 - Inventory
 - Access control
 - Shop floor applications
 - Mobile POS
- T&L:
 - Route accounting
 - Direct store delivery
 - Workforce management
 - Courier value-added services
- Manufacturing:
 - Production and quality control
 - Intra-logistics
 - Inventory
 - Field maintenance
- Healthcare:
 - Bedside care
 - Pharmacy
 - Inventory management
 - Labs
 - Home healthcare

NOTE: The Android robot is reproduced or modified from work created and shared by Google and used according to terms described in the Creative Commons 3.0 Attribution License.



MEMOR™ 10

TECHNICAL SPECIFICATIONS

WIRELESS COMMUNICATIONS

Local Area Network (WLAN)	IEEE 802.11 a/b/g/n/ac and 802.11 k/r/v; Frequency range: Country dependent, typically 2.4 GHz and 5 GHz bands
Personal Area Network (WPAN)	Bluetooth wireless technology v5 (A9 version) / v4.2 (A8 version), Classic Bluetooth and BLE
NFC Communication	Support for the following standards: ISO14443-4 (type-A, type-B); ISO15693; Mifare; Felica
WWAN / Cellular	LTE-Advanced / 4G+; Cat 6 <ul style="list-style-type: none"> • EMEA and ROW Configuration: GSM: Quad band; CDMA: BC0; WCDMA: B1/5/8; FDD_LTE:B1/3/5/7/8/20/28; TDD_LTE:B38/39/40/41 • North America Configuration (PCTCRB certified): GSM: Quad band; CDMA: BC0/1; WCDMA: B1/2/4/5/8; FDD_LTE:B2/4/5/7/12/13/17/25/26; TDD_LTE:B38/39/40/41
Global Positioning System (GPS)	Integrated Assisted-GPS (A-GPS) Supported Types: GPS, GLONASS, BeiDou

DECODING CAPABILITY

1D / Linear Codes	Auto discriminates all standard 1D codes including GS1 DataBar™ linear codes.
Digital Watermark Codes	Digimarc® Barcode
2D Codes	Aztec Code, Data Matrix, HanXin Code, MaxiCode, MicroQR Code, QR Code, Dotcode
Postal Codes	Australian Post, Japan Post, KIX Code, PLANET, POSTNET, Royal Mail Code (RM4SCC), UPU FICS, USPS Intelligent Mail
Stacked Codes	Micro-PDF417, PDF417, GS1 DataBar Composites, GS1 DataBar Expanded Stacked, GS1 DataBar Stacked, GS1 DataBar Stacked Omnidirectional

ELECTRICAL

Battery	Replaceable battery pack with rechargeable Li-Ion batteries; 3.8v; 4,100 mAh (15.6 Watt-hours)
Wireless Charging	Qi Compliant; 10 Watt fast charging

ENVIRONMENTAL

Drop Resistance	Withstands drops from 1.5 m / 5.0 ft onto concrete (with rubber boot); Withstands drops from 1.2 m / 4.0 ft onto concrete (without rubber boot). Tested onto steel/concrete according to IEC 68-2-32 Method 2 and MIL STD 810G Transit drop test.
Tumbles	Withstands 1000 hits from 0.5 m / 1.6 ft and 250 hits from 1.0 m / 3.2 ft per IEC 600-2-32 with rubber boot; Withstands 600 hits from 0.5 m / 1.6 ft per IEC 600-2-32 without rubber boot
Particulate and Water Sealing	IP65
Chemical Resistance	Chemical cleanser and industrial oil resistant (both Standard and Healthcare models)
Healthcare Cleanable	Isopropyl Alcohol, Hydrogen Peroxide, Clorox® Bleach; applicable for both the device and docks
Temperature	Operating: -20 to 50 °C / -4 to 122 °F Storage/Transport: -30 to 70 °C / -22 to 158 °F

INTERFACES

Interfaces	USB-C: High Speed USB 2.0 Host and Client
-------------------	-------------------------------------------

SENSORS

Vibration	Software programmable for duration and intensity
Accelerometer	3-Axis accelerometer to detect orientation
Gyroscope	Senses angular velocity
Ambient Light	Auto adjusts display backlight
Proximity	Auto deactivates display when close to face

PHYSICAL CHARACTERISTICS

Dimensions	15.5 x 7.8 x 1.87 cm / 6.1 x 3.07 x 0.73 in
Display	5 inch IPS HD resolution 720 x 1280; LED backlight; Touch Screen: 5 points multi-touch capacitive panel with Dragontrail hardened glass
Keys	Physical Keys: 2 side scan keys; Power On/Off; Volume Up/Down; 3 user programmable Android™ keys
Weight	With Battery: 285.0 g / 10.0 oz

READING PERFORMANCE

Camera	Resolution: 13 megapixel; Illumination: User controllable LED flash; Lens: Auto focus
Scan Engine	2D Ultra slim area imager (supports 1D / 2D codes); Datalogic's 'Green Spot' for good-read feedback; Halogen™ DE2102 scan engine: Depth of Field: 4 to 90 cm / 1.6 to 35 in depending on bar code density and type; Resolution: Megapixel (1280 x 800 pixels); Illumination: White and Red LEDs (for Digimarc); Aiming: 650nm VLD; Field of View: 42°H x 26°V
Print Contrast (Minimum)	25%
Minimum Element Width	Halogen™ DE2102 scan engine: 1D Linear: 0.0635 mm / 2.5 mils; PDF: 0.0762 mm / 3 mils; Data Matrix: 0.152 mm / 6 mils

SAFETY & REGULATORY

Agency Approvals	The product meets necessary safety and regulatory approvals for its intended use.
Environmental Compliance	Complies to EU RoHS

SOFTWARE

Applications	Datalogic's SoftSpot technology for configurable soft triggers; Supports Datalogic's Queue Busting app; Pre-licensed device and browser lockdown powered by 42Gears; Enterprise class PTT available from Zello
Provisioning	Android Zero-Touch, QR Code enrollment, NFC Bump provisioning
Configuration and Maintenance	Scan2Deploy Studio, DXU, OEMConfig
Software Maintenance	Datalogic Shield: recurring security patches, firmware updates, and OS upgrades.
Development	Java, Cordova and Xamarin SDK available
MDM Compatibility	SOTI MobiControl, VMWare AirWatch, Ivanti Avalanche, 42Gears SureMDM, Microsoft Intune
Terminal Emulation Compatibility	StayLinked SmartTE, Ivanti Velocity

SYSTEM

Expansion Slots	Micro-SD card slot: Compatible with Micro SD-HC cards; Data transfer up to 48 Mbps; User-accessible
SIM Slot	MicroSIM Standard size
Memory	System RAM: 3 GB; eMMC Flash: 32 GB
Microprocessor	2 GHz Octa-core
Operating System	Android v9 with GMS (upgradeable to Android 10)
Real-Time Clock	Time and date stamping under software control

WARRANTY

Warranty	1-Year Factory Warranty
-----------------	-------------------------

ACCESSORIES

Base Stations/Chargers



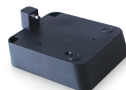
94A150095
Single Slot Dock



94A150096
3-Slot Dock



94ACC0192
Battery Charger



Single Slot Ethernet Adaptor,
also available in a 3-slot Adaptor

Miscellaneous



94A150097
Vehicle Dock



94ACC0201
Pistol Grip



94ACC0193
Rubber Boot